



STADSHERSTEL AMSTERDAM N.V.

The Company for City Restoration



History

- Situation in Amsterdam after World War II
- Desperate need for restoration
- Subway
- Stadsherstel founded in 1956













The goals

- Buying and restoring the most threatened buildings, which are characteristic for Amsterdam: especially listed monuments
- Bring back dwellings with a modern interior quality, in the interest of public housing
- Maintaining restored buildings in good constructional condition, which they obtained with restoration



London House

KENTGRAN TRADING CO. LTD LONDON
H. R. SHALSON ASSOCIATES LONDON

AMSTERDAM
Her

UNION
KUNST
UNION



HOUTHANDEL
GEBR. GOEDKOOP
WESTERSTR. 61
BRUYNFEEL
hecht
ALTIJD IN VERKOPING

Ruton
met de voor
stornuizen

WIL DE WERK
TECHNIEK

London House



30



De afdelingschef van de
Vrijheid van de
en de...
van de...
van de...

MAX BÖGL



Kind of organisation

- Housing association
- Public limited liability company
- Shareholders
- Annual dividend
- Profits used for new projects
- Dissolution

How to do the job

- Buying
- Restoring
- Marketing
- Maintaining











1970s





1986



Offices multifunctional







Size of organisation

- 624 buildings
- 10 new projects each year
- 1071 dwellings
- 244 office spaces
- 41 cafe's and restaurants





Corporate Social Responsibility (CSR)





Why?

- It is necessary
- Image
- Public partnership
- We are an example
- Ready for the future



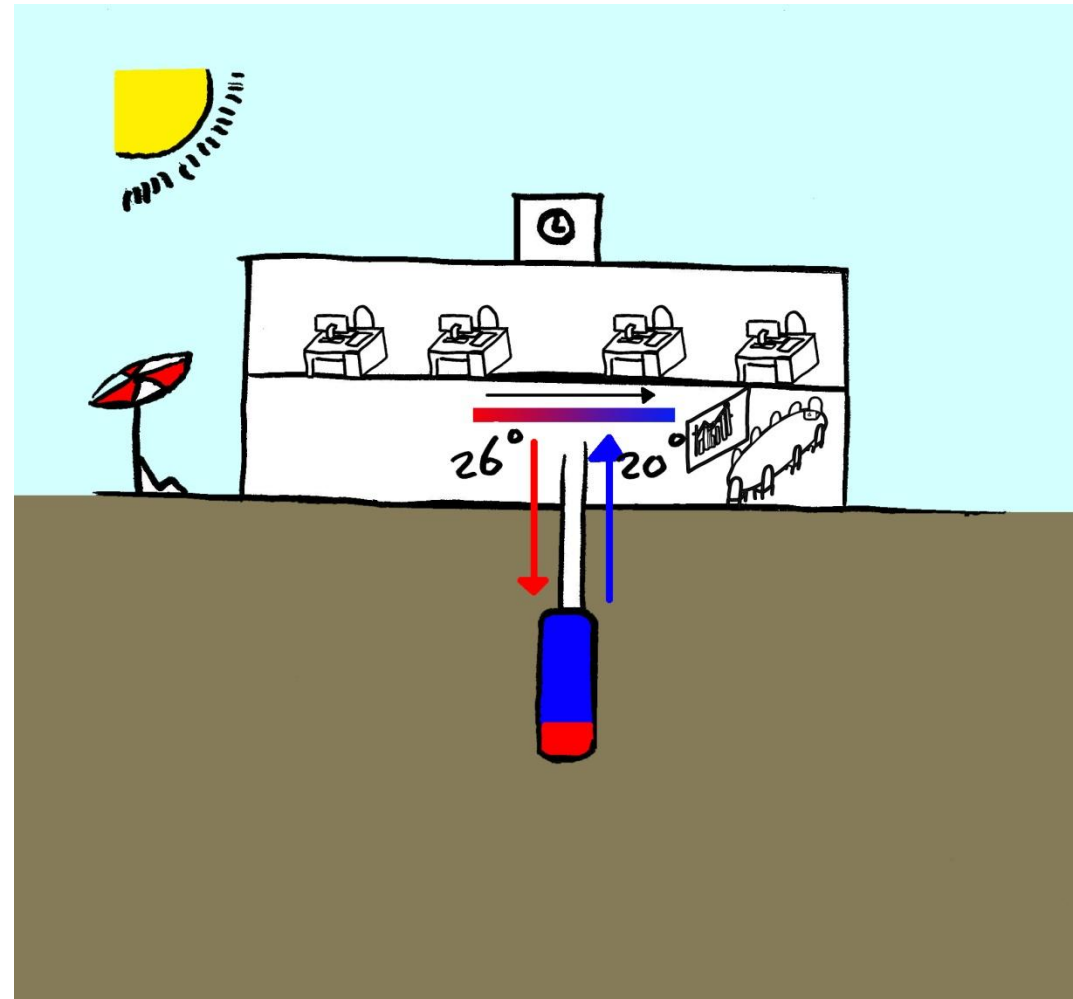
Examples of practice

- Heating



- During summer:

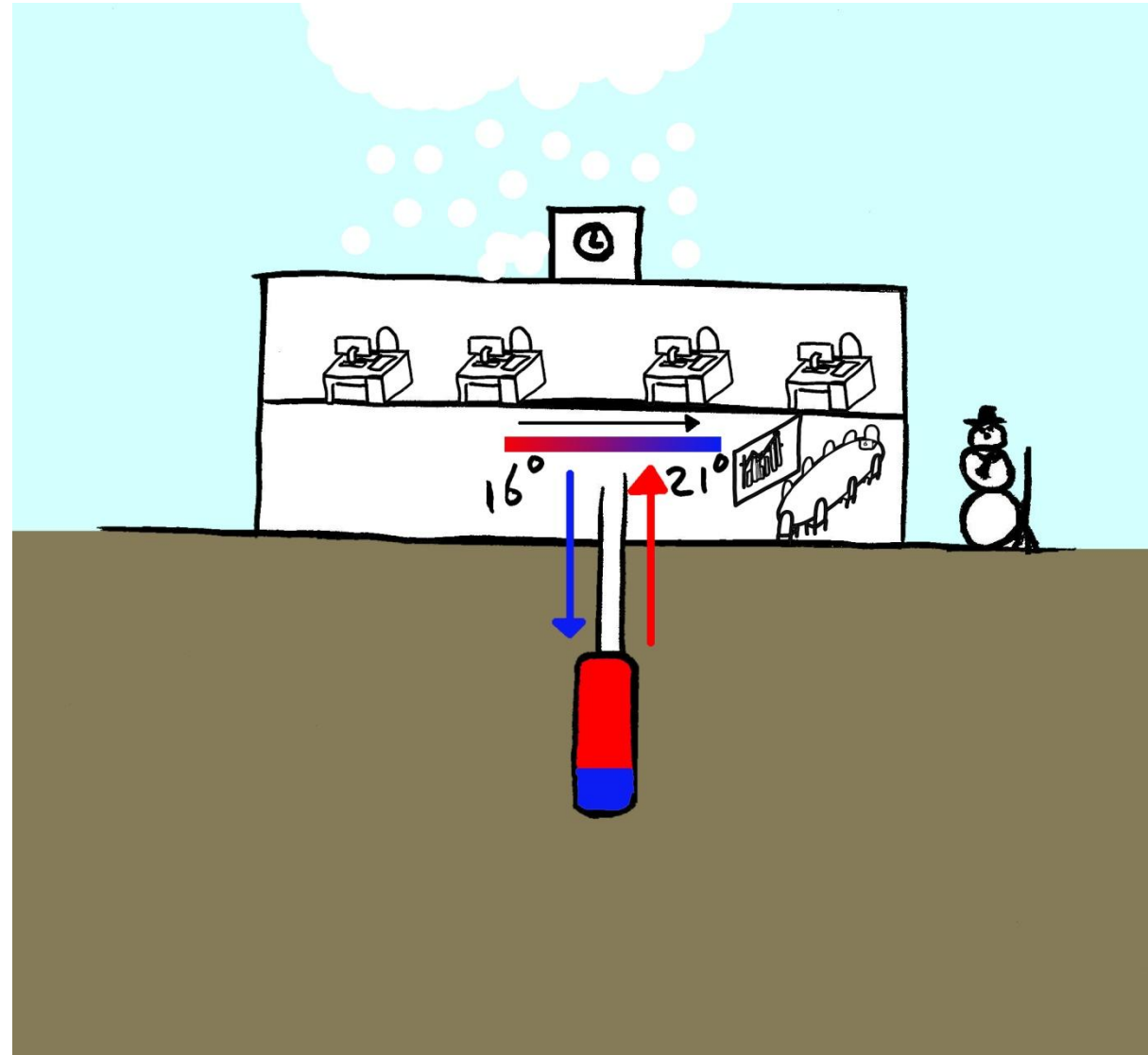
Buffering





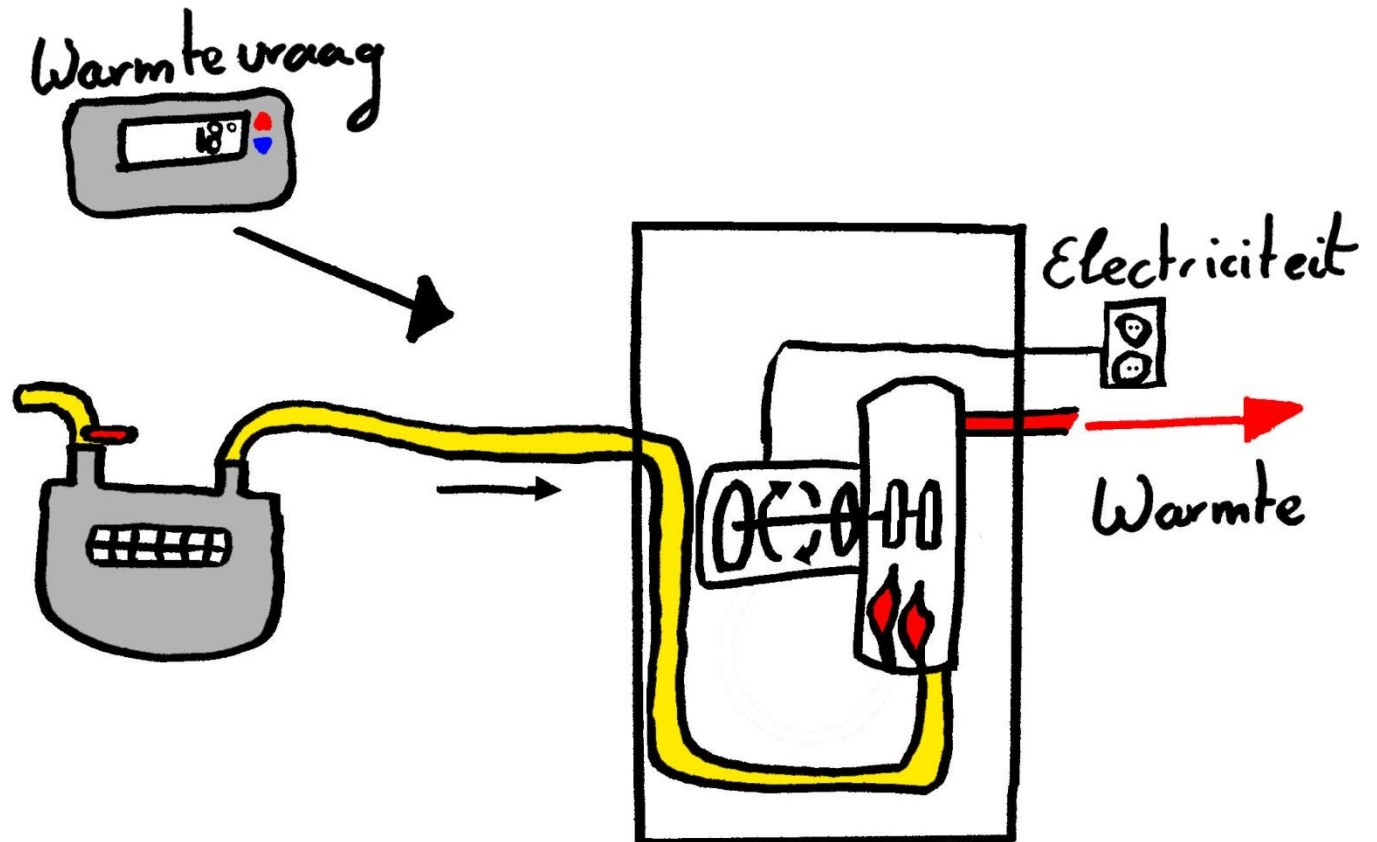
Buffering

- During winter:



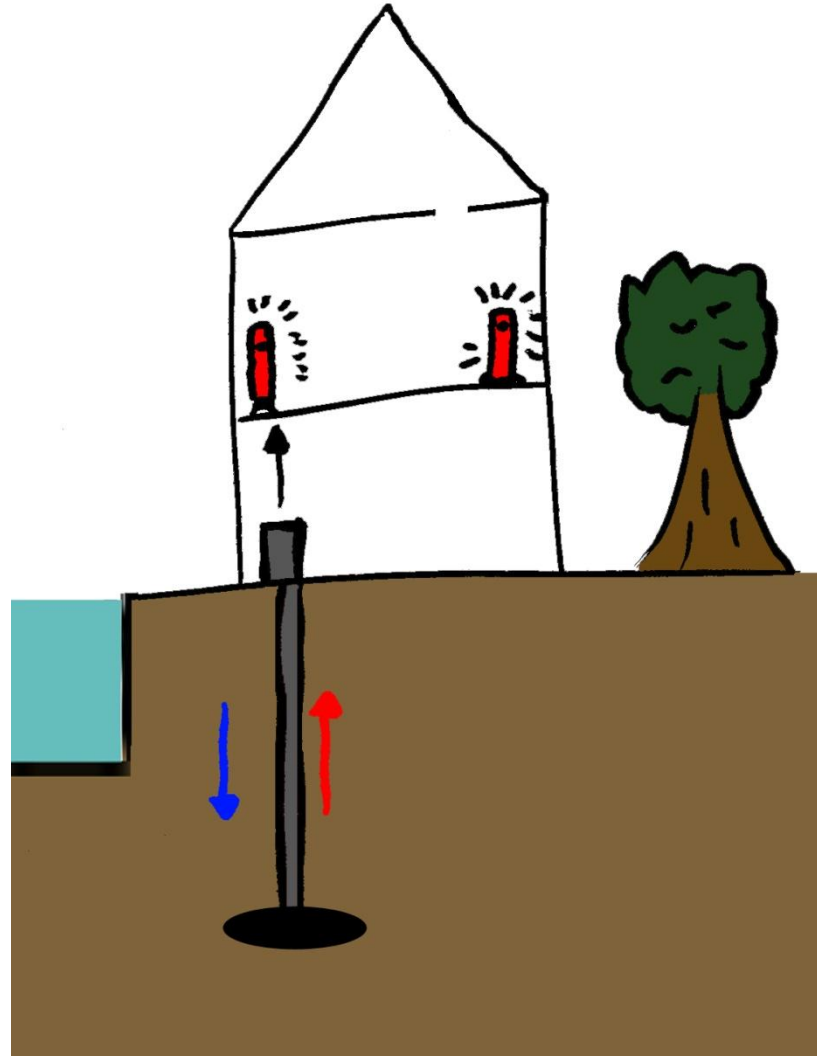


Mini power plant



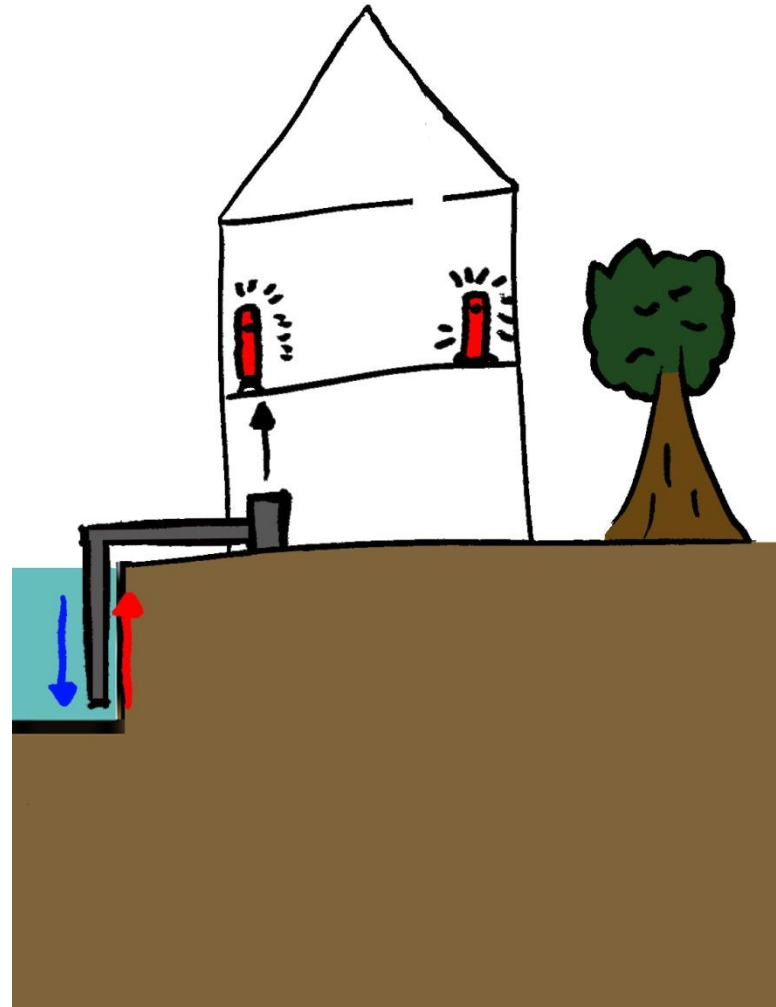


Heatingpump ground



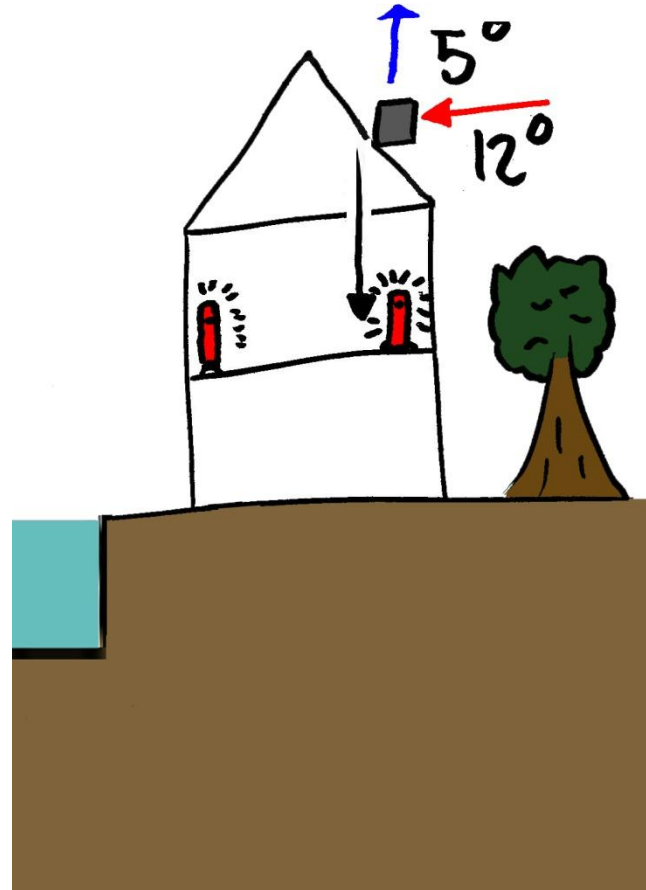


Heatingpump water





Heatingpump air









And also:

- Floor heating (low temperature)
- Smart thermostat
- Etc



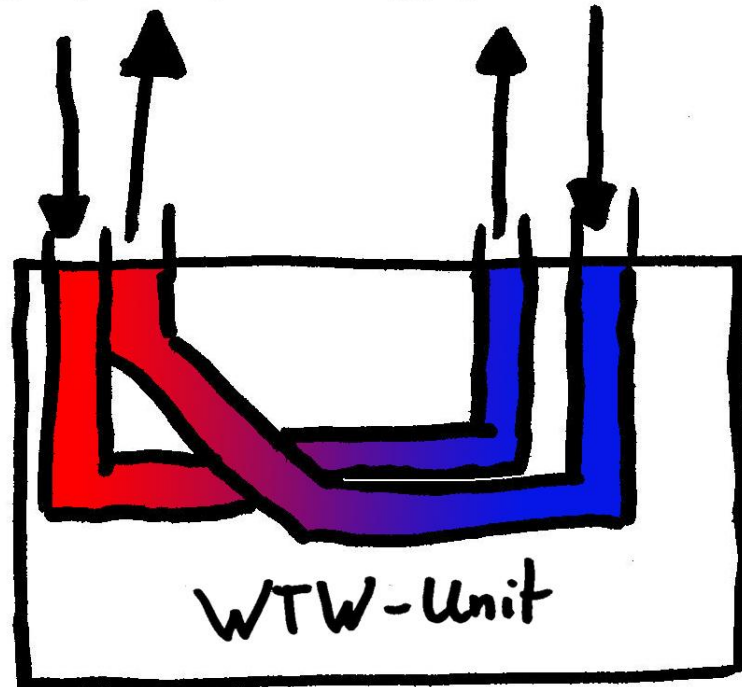
Examples of practice

- Power saving



Heat back on fresh air

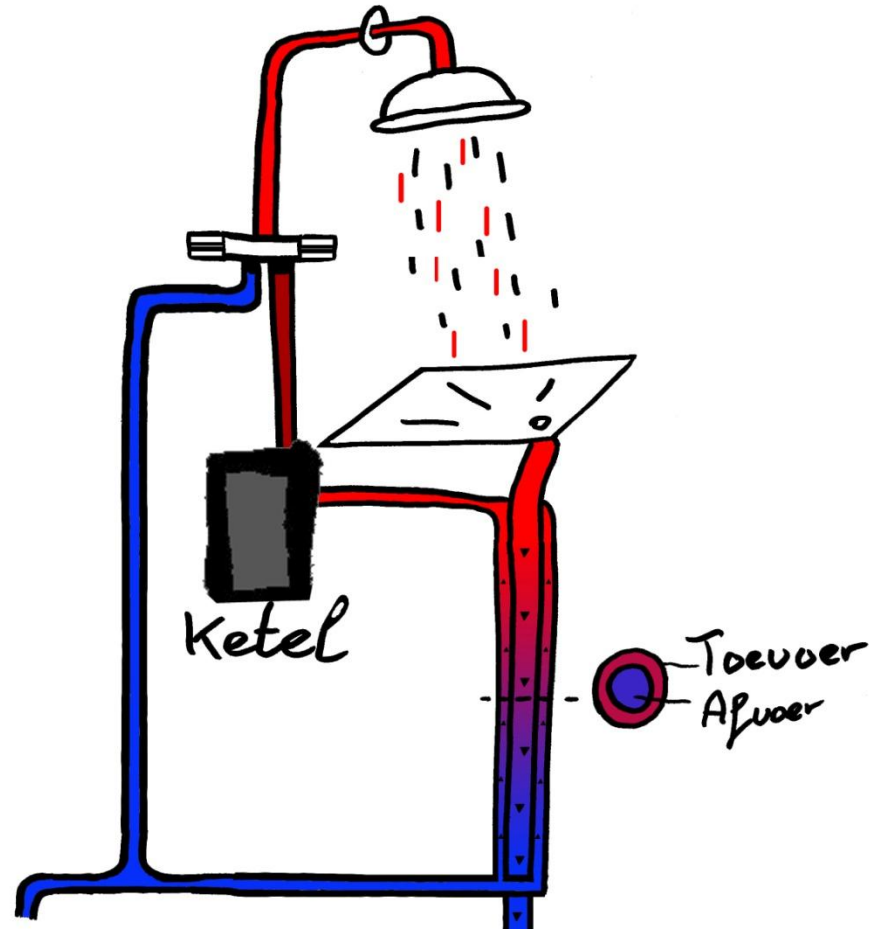
Binnenlucht Buitenlucht







Heat back on water





Examples of practice

- Isolation: Be careful!
- In construction it can cause damage
- In windows it's hard to fit









And ofcourse:

- Led lighting
- Lighting on movement
- Water saving tap

- Last but not least:

Behaviour





Cofounder of the Groene Grachten



restaurant Nieuwe Prinsengracht 43 - 53: pilotproject de Groene Grachten



Opdrachtgever: StadsHerstel Amsterdam
www.stadsHerstel.nl



Constructeur: Strackee
www.strackee.nl



Architect: Architectenbureau Emma
www.emma-architecten.nl



Aannemer: Bv Aannemersbedrijf
Scheurer
www.vios-bouw.nl





end